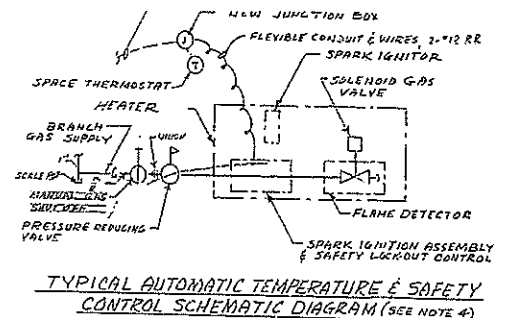


HEATERS	CAPACITY BTU	TYPE
1A-12	25,000	HORIZONTAL STRAIN SIDED REFLECTOR
1A-13	30,000	HORIZONTAL STRAIN SIDED REFLECTOR
1A-14	30,000	HORIZONTAL STRAIN SIDED REFLECTOR
1A-15	30,000	HORIZONTAL STRAIN SIDED REFLECTOR
1A-16	30,000	HORIZONTAL STRAIN SIDED REFLECTOR
1A-17	30,000	HORIZONTAL STRAIN SIDED REFLECTOR
1A-18	30,000	HORIZONTAL STRAIN SIDED REFLECTOR
1A-19	30,000	HORIZONTAL STRAIN SIDED REFLECTOR
1A-20	30,000	HORIZONTAL STRAIN SIDED REFLECTOR
1A-21	30,000	HORIZONTAL STRAIN SIDED REFLECTOR
1A-22	30,000	HORIZONTAL STRAIN SIDED REFLECTOR
1A-23	30,000	HORIZONTAL STRAIN SIDED REFLECTOR
1A-24	30,000	HORIZONTAL STRAIN SIDED REFLECTOR
1A-25	30,000	HORIZONTAL STRAIN SIDED REFLECTOR
1A-26	30,000	HORIZONTAL STRAIN SIDED REFLECTOR
1A-27	30,000	HORIZONTAL STRAIN SIDED REFLECTOR
1A-28	30,000	HORIZONTAL STRAIN SIDED REFLECTOR
1A-29	30,000	HORIZONTAL STRAIN SIDED REFLECTOR
1A-30	30,000	HORIZONTAL STRAIN SIDED REFLECTOR
1A-31	30,000	HORIZONTAL STRAIN SIDED REFLECTOR
1A-32	30,000	HORIZONTAL STRAIN SIDED REFLECTOR
1A-33	30,000	HORIZONTAL STRAIN SIDED REFLECTOR
1A-34	30,000	HORIZONTAL STRAIN SIDED REFLECTOR
1A-35	30,000	HORIZONTAL STRAIN SIDED REFLECTOR
1A-36	30,000	HORIZONTAL STRAIN SIDED REFLECTOR
1A-37	30,000	HORIZONTAL STRAIN SIDED REFLECTOR
1A-38	30,000	HORIZONTAL STRAIN SIDED REFLECTOR
1A-39	30,000	HORIZONTAL STRAIN SIDED REFLECTOR
1A-40	30,000	HORIZONTAL STRAIN SIDED REFLECTOR
1A-41	30,000	HORIZONTAL STRAIN SIDED REFLECTOR
1A-42	30,000	HORIZONTAL STRAIN SIDED REFLECTOR
1A-43	30,000	HORIZONTAL STRAIN SIDED REFLECTOR
1A-44	30,000	HORIZONTAL STRAIN SIDED REFLECTOR
1A-45	30,000	HORIZONTAL STRAIN SIDED REFLECTOR
1A-46	30,000	HORIZONTAL STRAIN SIDED REFLECTOR
1A-47	30,000	HORIZONTAL STRAIN SIDED REFLECTOR
1A-48	30,000	HORIZONTAL STRAIN SIDED REFLECTOR
1A-49	30,000	HORIZONTAL STRAIN SIDED REFLECTOR
1A-50	30,000	HORIZONTAL STRAIN SIDED REFLECTOR

GROUND FLOOR PLAN
SCALE: 1/8" = 1'-0"



TYPICAL AUTOMATIC TEMPERATURE & SAFETY CONTROL SCHEMATIC DIAGRAM (SEE NOTE 4)

TYPICAL OPERATION SEQUENCE FOR INFRARED HEATERS

1. WHEN SPACE CONDITION CALLS FOR HEAT THE THERMOSTAT ENERGIZES THE SPARK IGNITION ASSEMBLY.
2. THE SPARK IGNITION ASSEMBLY PRODUCES A SPARK AT THE SPARK IGNITOR.
3. THE SOLENOID GAS VALVE OPENS AND THE SAFETY LOCK-OUT CONTROL IS ENERGIZED.
4. THE BURNER IGNITES AND IS PROVED IN APPROX. 5 SECONDS BY THE FLAME DETECTOR. IF THE BURNER DOES NOT IGNITE THE FLAME DETECTOR CAUSES THE LOCK-OUT CONTROL TO CLOSE THE SOLENOID GAS VALVE IN APPROX. 25 SECONDS AND ACTIVATE THE AUTOMATIC RESET CYCLE.
5. WHEN THE SPACE CONDITION IS SATISFIED THE THERMOSTAT OPENS AND DE-ENERGIZES THE SYSTEM, WHICH CLOSES THE SOLENOID GAS VALVE AND RUNS THRU THE RESET CYCLE TO RETURN THE CIRCUIT TO THE READY TO START POSITION.

NOTES

1. NEW CONDUIT LOCATION SHALL BE COORDINATED WITH ALL EXISTING AND/OR NEW MECHANICAL, ELECTRICAL EQUIPMENT, PIPING, ETC., NECESSARY TO INSTALL NEW CONDUIT (SEE NOTE 4).
2. INSTALL FLEXIBLE CONDUIT (TYPE & SIZE AS REQ'D) FROM JUNCTION BOX TO HEATER UNIT & SECURE AS REQ'D. (SEE NOTE 1).
3. NUMBER & LETTER IN PARENTHESES INDICATES THE INFRARED HEATER UNIT NUMBER, THE LETTER THAT FOLLOWS THE PARENTHESES INDICATES THE THERMOSTAT THAT CONTROLS UNIT (SEE SCHEMATIC DIAGRAM).
4. INTERNAL WIRING LAYOUT OF HEATER UNIT NOT SHOWN. INTERNAL WIRING DIAGRAM TO BE PROVIDED WITH HEATER UNIT FURNISHED. NOTE: COORDINATE WITH SCHEMATIC DIAGRAM & WIRING LAYOUT & COMPLY AS REQUIRED.
5. UTILIZE EXISTING SPARK CIRCUIT BREAKERS (7-100A FRAME) OR TRIP EA. IN EXISTING PANELBOARD "L1A" FOR THE NEW BRANCHED CIRCUITS (HOME RUNS) AND CONNECT AS REQUIRED, SEE LEGEND.
6. FOR ALL INFORMATION NOT SHOWN, SEE HEATING (DWG. NO. 27-B) AND SPECIFICATIONS.

LEGEND

- ① NEW THERMOSTAT (110, 120V, 1/2", 60W, 1-SPST) - SEE NOTE 5 AND SPEC.
- NEW HOME RUNS (BRANCHED CIRCUITS) NUMBER OF CIRCUITS INDICATED BY NUMBER OF ARROWS - SEE NOTES 1 & 5.
- NEW CONDUIT AND WIRES (EXPOSED) - SEE NOTE 1.
- NEW GAS PIPING - SEE NOTE 6.
- NEW FLEXIBLE CONDUIT - SEE NOTE 2.
- INFRARED HEATER (HORIZONTAL) - SEE NOTES 3, 4 & 6.
- INFRARED HEATER (0°-30°) - SEE NOTES 3 & 6.
- ② NEW JUNCTION BOX - NOTE: QUANTITY REQ'D. AS PER FIELD CONDITION. EXIST. PANELBOARD (TYPE & SIZE AS INDICATED) TO REMAIN.
- ⊕ INDICATES POINT OF CONNECTION BETWEEN NEW AND EXTG. WORK
- NEW WORK TO BE PERFORMED
- EXTG. WORK TO REMAIN
- WORK TO BE REMOVED

0005322 11

DATE	DESCRIPTION	BY	CHECKED
11-17-67	REVISION 1
11-17-67	REVISION 2

GENERAL SERVICES ADMINISTRATION PUBLIC BUILDINGS SERVICE - WASHINGTON DC			
PROJECT	HEATING RENOVATION		
LOCATION	WASHINGTON, D.C.		
SITE	425 L STREET SE		
CHARTER	62-33-1504	PROJECT	...
DRAWN BY	PAULSON	CHECKED BY	PAULSON
DRAWING TITLE	GROUND FLOOR PLAN		
HEATING - ELECTRICAL			
LEAVING NO.	27-9		



ALL DIMENSIONS UNLESS OTHERWISE NOTED BY THE ARCHITECT SHALL BE IN FEET AND INCHES TO NEAREST 1/8"

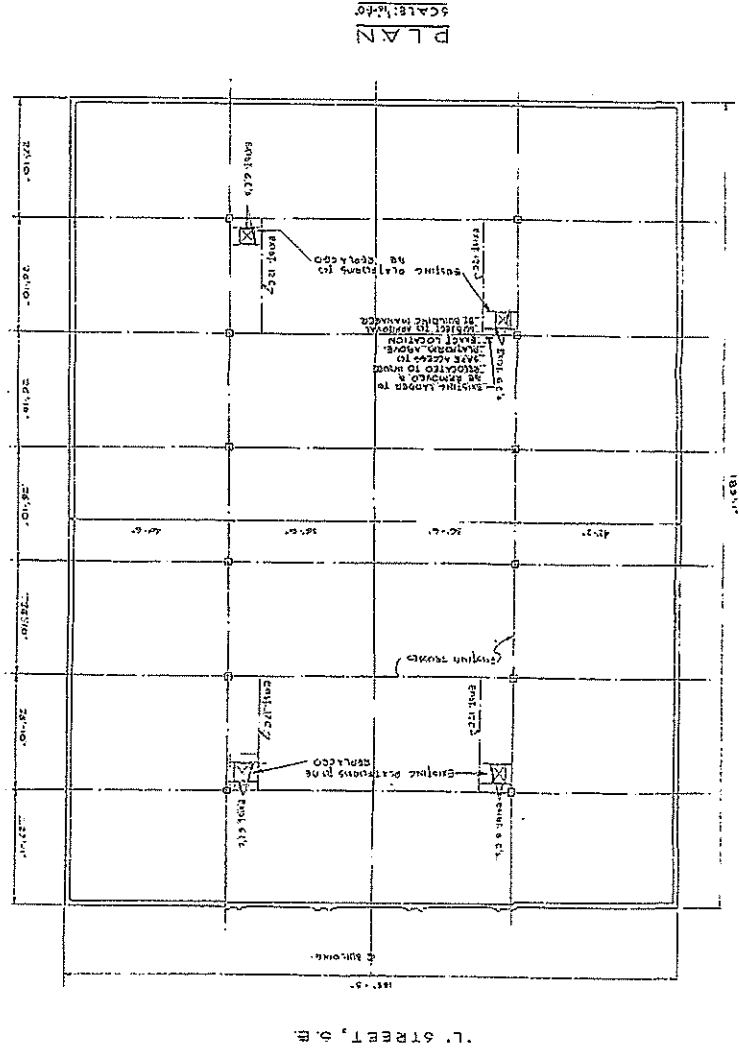
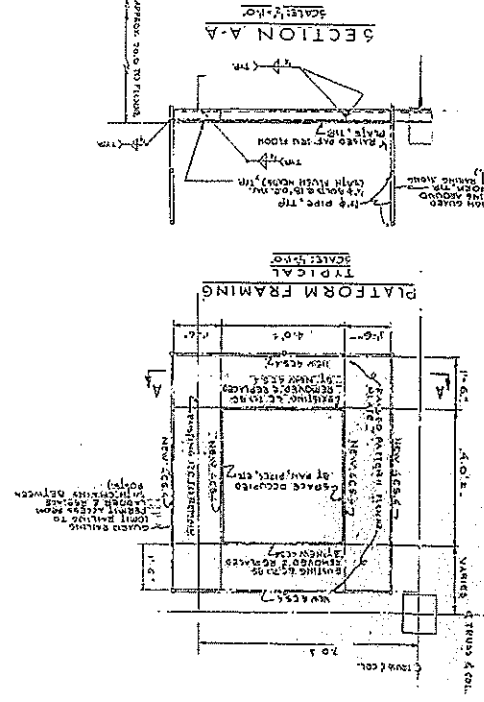
GENERAL CONTRACTOR TO VERIFY ALL DIMENSIONS AND CONDITIONS OF EXISTING WORK PRIOR TO START OF WORK

PROJECT	NEW BUSINESS SERVICE - WASHINGTON DC
CLIENT	GENERAL SERVICES ADMINISTRATION
LOCATION	WASHINGTON, D.C.
DATE	NOV. 1972
SCALE	AS SHOWN
DESIGN AND CONSTRUCTION DIVISION	
REGION 3	

NOTE:
ALL MEASUREMENTS SHOWN
ON THIS DRAWING ARE TO
CENTER UNLESS OTHERWISE
NOTED.

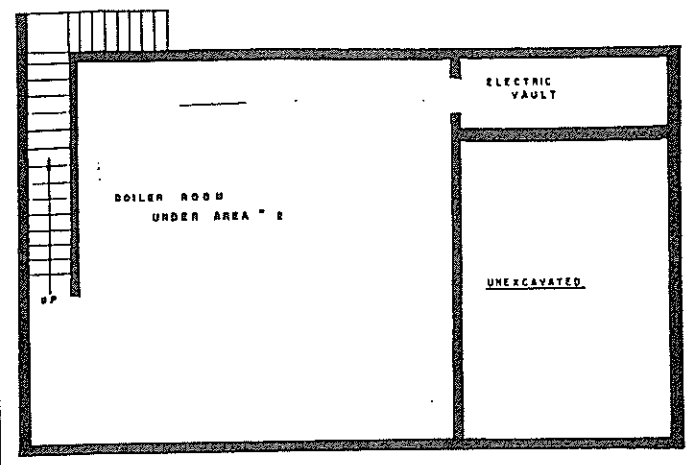
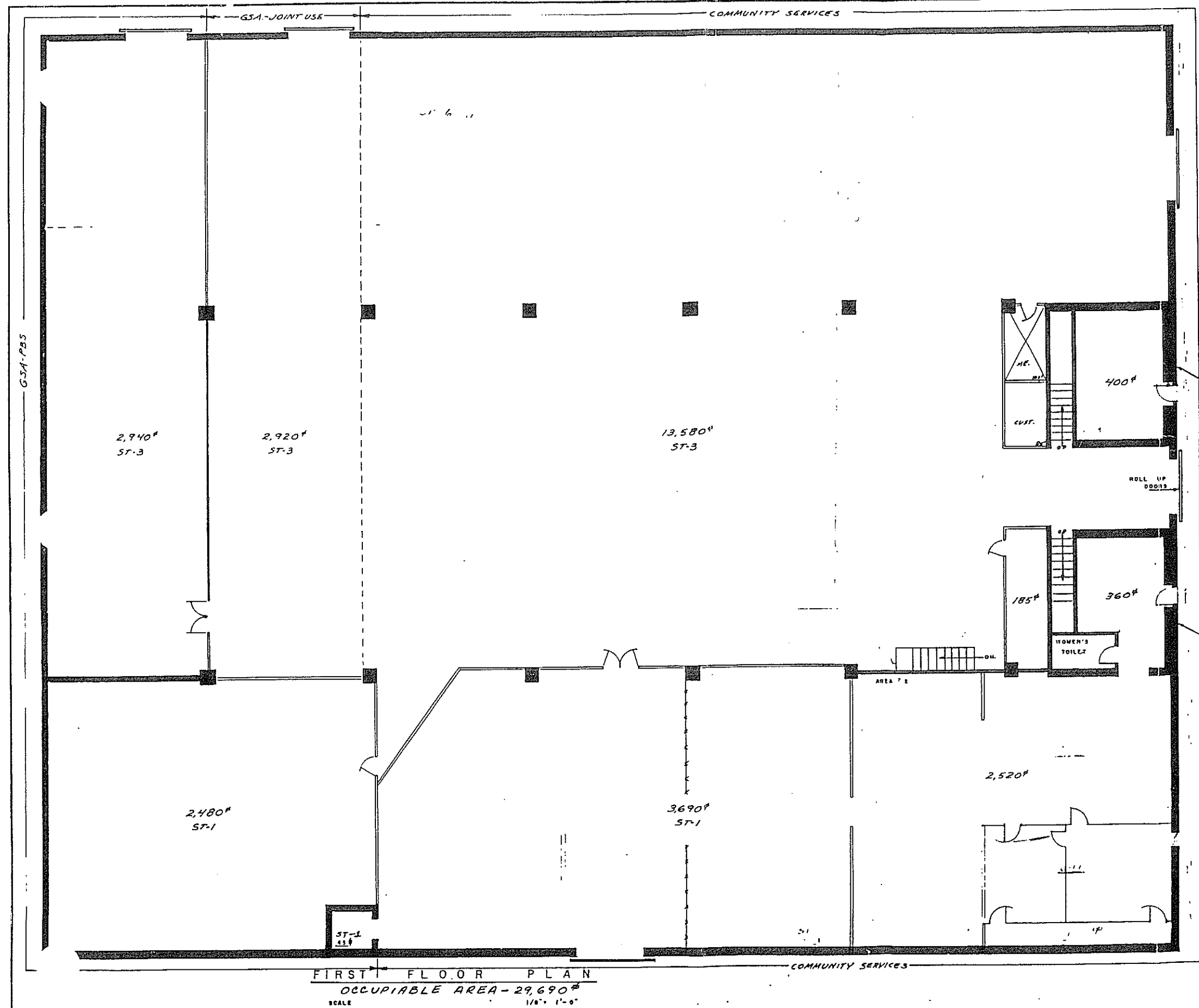
PROPERTY OF THE UNITED STATES GOVERNMENT
REPRODUCTION OR TRANSMISSION
OF THIS DOCUMENT IS PROHIBITED
WITHOUT PERMISSION

D0005322 9

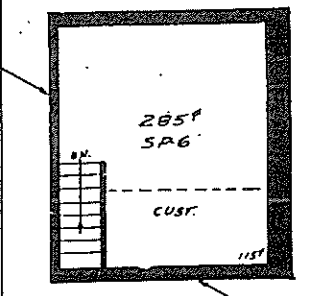


L. L. STREET, S. B.

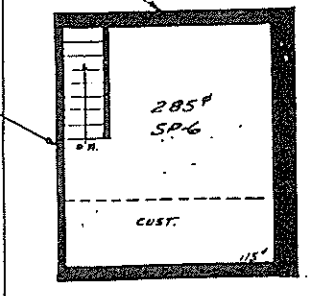
PLAN
SCALE: 1/8\"/>



BOILER ROOM & VAULT
SCALE 1/8" = 1'-0"



ABOVE FIRST FLOOR LEVEL
NET ASSIGNABLE AREA
COMMUNITY SERVICES



BUILDING TOTALS
FIRST FLOOR - - -

FIRST FLOOR PLAN
OCCUPIABLE AREA - 29,690^{sq}
SCALE 1/8" = 1'-0"

BUILDING STATISTICS - FLOOR FIRST FLOOR & BOILER ROOM	
BUILDING NO. 0053	
OCCUPIABLE AREA	29,690
BUILDING SUPPORT AREA	3,500
MECHANICAL	1,470
TOILETS	310
CUSTODIAL	85
CIRCULATION	511
HORIZONTAL	0
VERTICAL	511
CONSTRUCTION	41,520
CROSS AREA	33,200

UPDATED	4-17-77
GENERAL SERVICES ADMINISTRATIVE PUBLIC BUILDINGS SERVICE - WASHINGTON	
PROJECT	AUTO REPAIR SHOP
LOCATION	WASHINGTON D. C.
STREET	49 L STREET S.
PROJ. NO.	FILE NO.
DRAWN BY	7-29-66 CHECKED BY
DRAWING TITLE	FIRST FLOOR & BOILER ROOM
ASSIGNMENT, P.L.	
DRAWING NO.	1 OF 1